

SPARTA

Dactylis glomerata

GrassLopata

Cocksfoot/Orchard grass

Combining Later Heading with Yield

- Intermediate, leafy type with high palatability
- Perfect yield distribution
- Good winterhardness
- High disease resistance

Ratings

Persistency



Grazing tolerance



Mixture adaptation



Leafy Type with High Palatability

SPARTA is a leafy, medium tall growing type with many tillers. The leafy growth makes SPARTA more palatable to animals compared to earlier types which tends to develop more stems in spring.

Good Yield Distribution

The yield distribution of SPARTA is very good as shown in the figures below. SPARTA is characterized by a good production in spring, and a continued high production during summer and autumn.

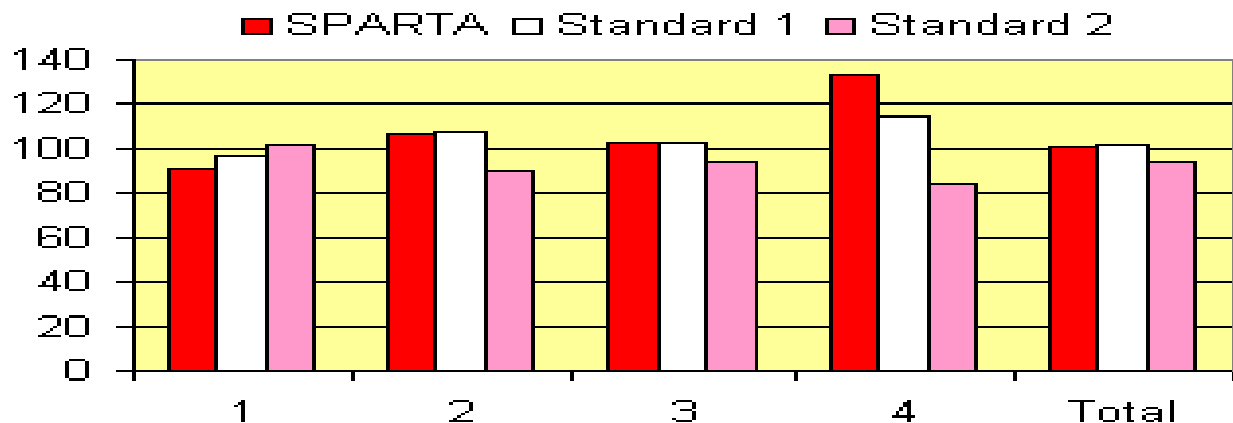
Good Winterhardiness

The winterhardiness of SPARTA has been tested with a positive result in Austria, and lately, SPARTA has been listed in Russia and Estonia due to its good winter performance.

High Disease Resistance

SPARTA has proven to have a good resistance to *Mastigosporium* and rust.

Yield distribution of SPARTA - cut 1 to 4.



Source: Official trials in Denmark.